



Assembly Instructions

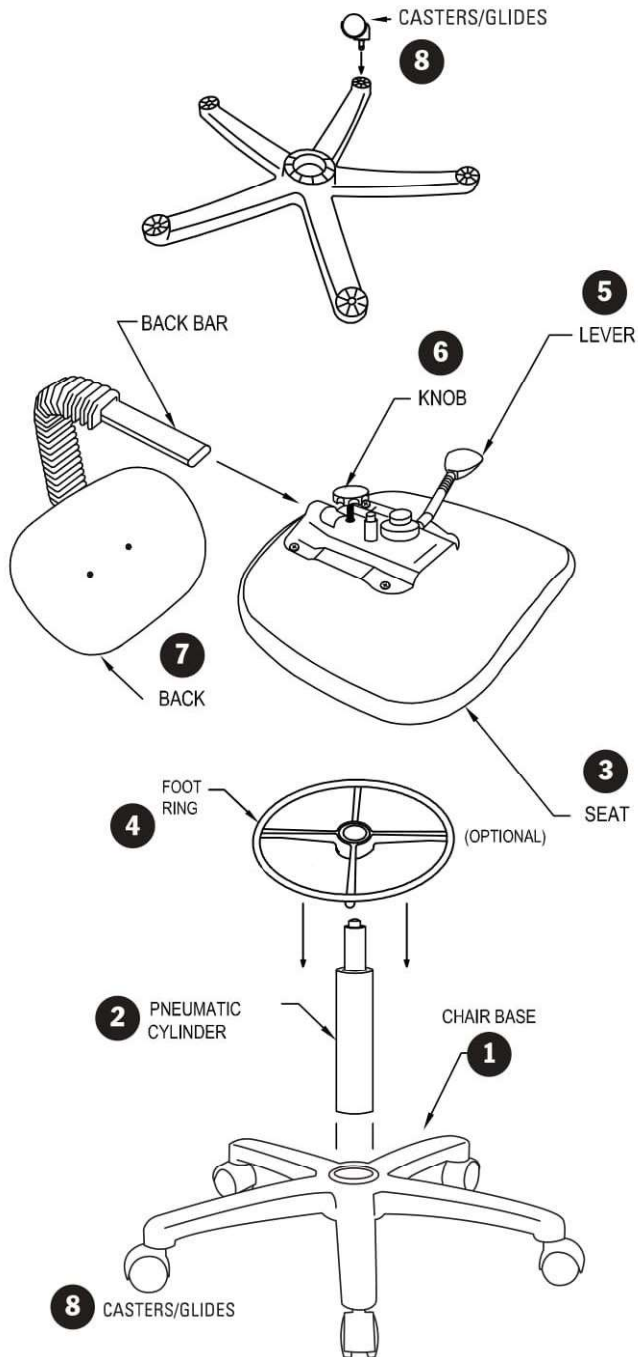


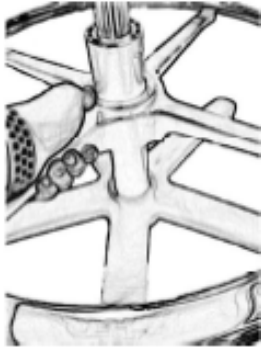
figure 1

- 1) Remove base, back/back bar, pneumatic cylinder, casters/glides, and seat from box.
- 2) Put casters or glides on base. Use pressure to push in (8).
- 3) Slide **optional** foot ring (4) over pneumatic cylinder from bottom (2) about halfway up the cylinder
- 4) Place base with legs on hard level surface (1).
- 5) Insert pneumatic cylinder as shown in (2) into center hole of base and lightly push down. Adjust foot ring to desired height.
- 6) Turn seat upside down to assemble back. It may be helpful to lay the seat on the edge of a table to slide the back bar into position.
- 7) Loosen knob (6) counter clockwise slightly to allow the back bar to slide into the control mechanism on the seat. Push in until you hear it click. Then tighten by turning knob (6) clockwise, do not overtighten.
- 8) Turn seat and back over and align the center hole on the bottom of the seat with the top of the pneumatic cylinder and lightly push down. With the weight of your body, carefully sit on the seat. This will press the base, pneumatic cylinder, and seat together.
- 9) To raise the height of your chair simply pull up on lever (5) while not seated.
- 10) To lower the height of your chair, while seated on chair, pull up on lever (5).

In/Out and Up/Down back adjustments not available on all options.

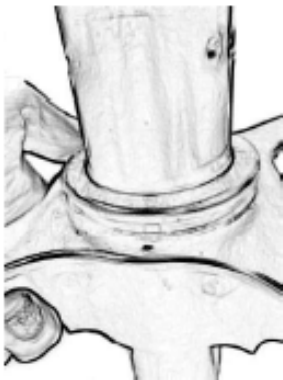


Assembly Instructions ****** Initial Installation must be completed from the bottom of the cylinder ******

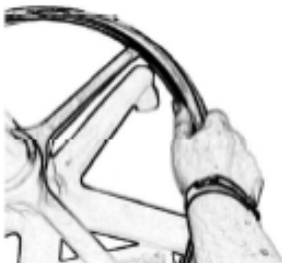


Unlock the foot ring by pushing the top of the inner center hub down.

Adjust the height to the appropriate height.



Lock the foot ring in place by pushing on the spokes until the inner center hub extends approximately ½" from the outer center hub.



To fully lock, put pressure alternatively on the outer ring sides.