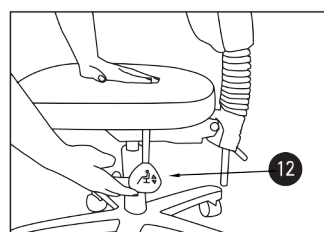
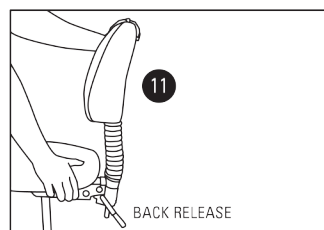
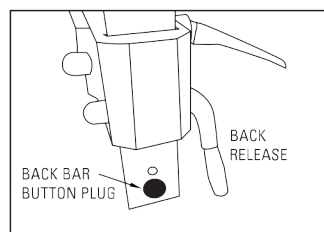
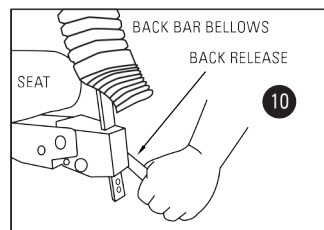
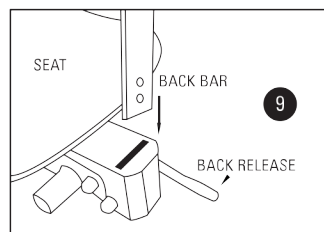
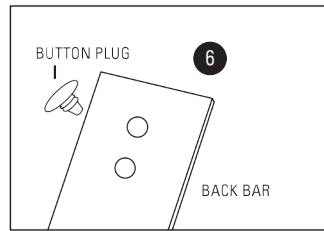
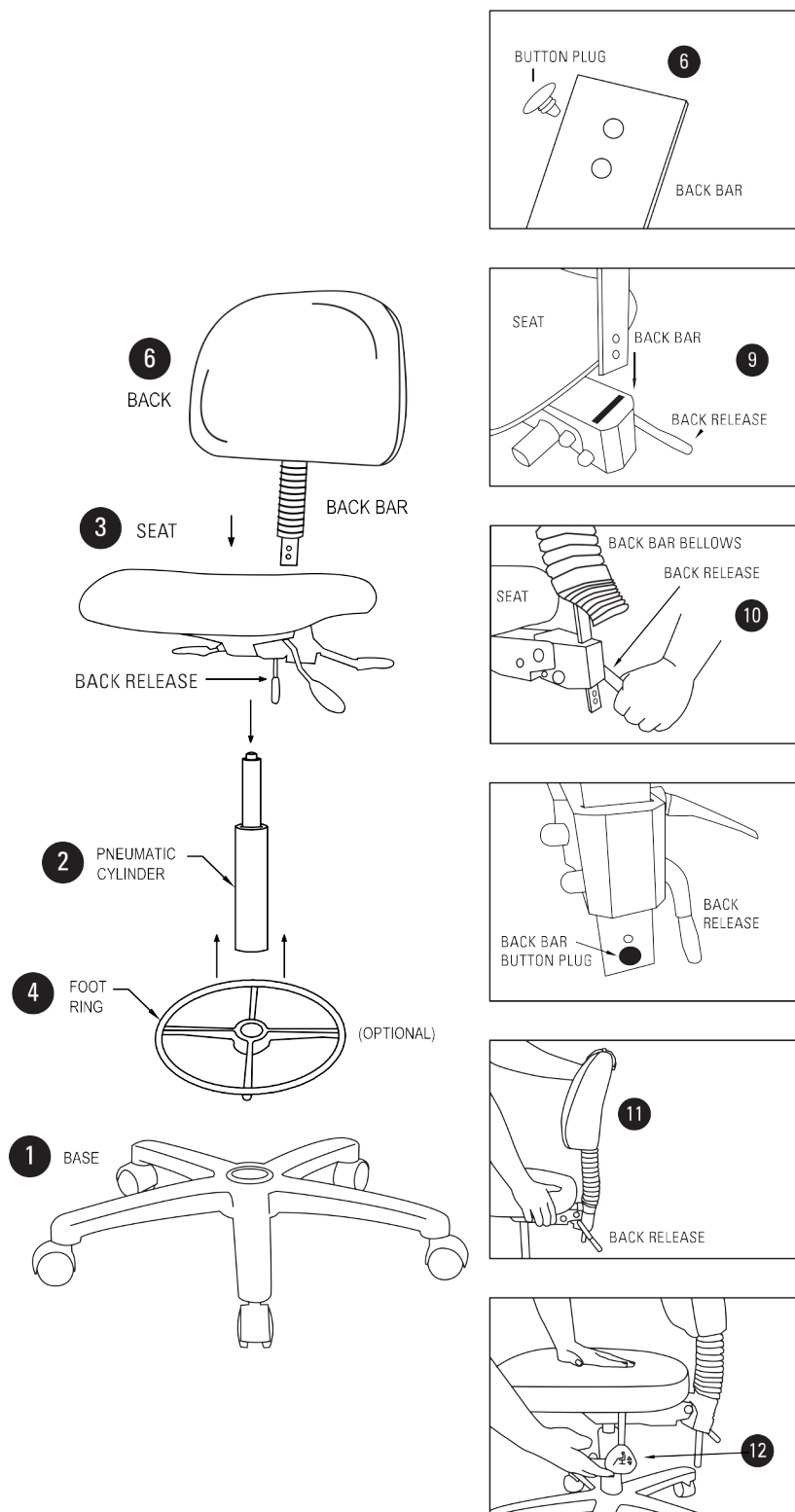


Assembly Instructions



- 1) Remove base, back/back bar, pneumatic cylinder packaging, seat, optional foot ring, and casters/glides from box.
- 2) Slide **optional** foot ring (4) over bottom pneumatic cylinder (2). The foot ring rests atop spokes. Make sure spokes face the floor.
- 3) Insert pneumatic cylinder (2) into center hole of base with colored button up and lightly push down.
- 4) Align the center hole of the underside of the seat assembly (3) with the top of the pneumatic cylinder (2) and lightly push down. Kneel on the seat to hold it together. This will press the base, pneumatic cylinder and seat together.
- 6) To assemble chair back lift the back release. Insert back bar through the control channel slot (9). Adjust the height of the seat back for comfort and push the back release lever down to lock the bar in place (10). Once locked, push the enclosed safety button into the lower hole of back bar, flat side out.
- 7) Adjust the seat back to the desired angle using the back adjustment lever located on the side on the seat (11).
- 8) Adjust the height of the seat cushion to the desired position using the height adjustment lever on the left side of the seat (12).

